



California Faucets®

**Descanso®**

Industrial Dual Handle Wall Mount Pot Filler

**Features**

- Available in 28 finishes including 13 PVD finishes
- All brass construction
- 1/4 turn ceramic disc cartridges
- Dual jointed swing spout
- 1/2" FIP inlet for quick connect
- Max flow rate: 4.0 gpm (15.1 L/min) at 60 psi

**K30-200-XX**



K30-200-SX SHOWN

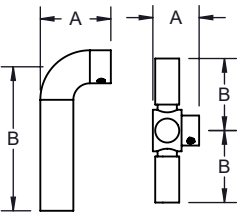
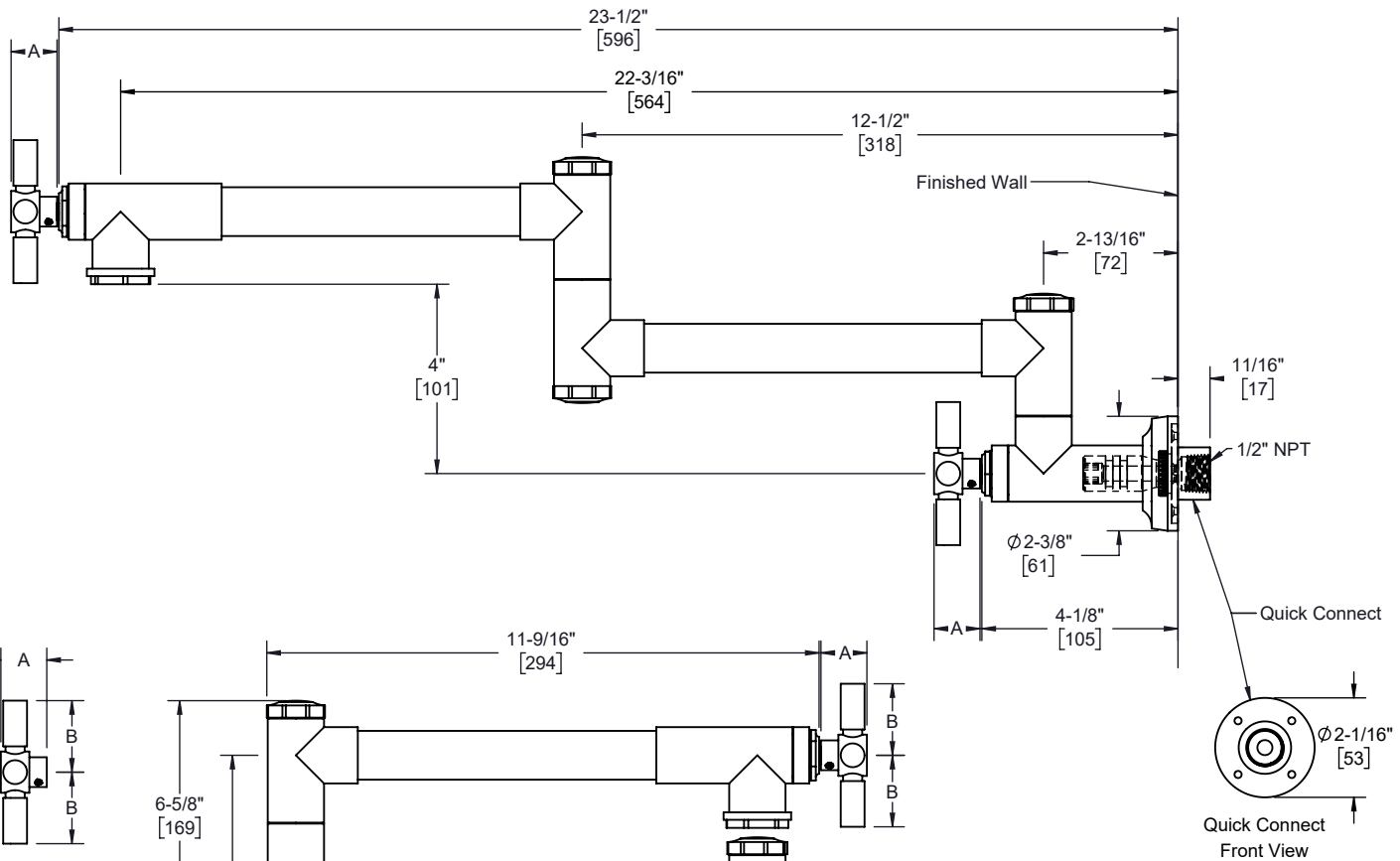
**Codes/Standards Applicable**

Product meets or exceeds the following:

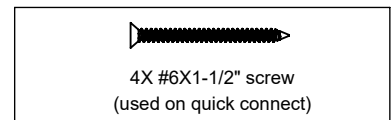
- ASME A112.18.1/CSA B125.1
- NSF 61, & NSF 372
- Commonwealth of MA
- ADA compliant (Lever handles only)



XX = Handle Style



Handle Style	A	B
SL	1-1/2" [38]	3" [76]
KL	1-1/2" [38]	3-1/8" [79]
FL	1-1/2" [38]	3-1/8" [79]
SX	15/16" [24]	1-1/2" [38]
KX	15/16" [24]	1-1/2" [38]
FX	15/16" [24]	1-1/2" [38]



Thru-Hole Specifications		
Min	Recommended	Max
Ø 1-1/8" [29]	Ø 1-1/8" [29]	Ø 1-1/4" [32]

Specifications subject to change without notice

Dimensions are inches, rounded to 1/16"  
[Dimensions in brackets are mm, rounded to 1mm]

