

# Assembly Instruction Sheet #IS-1221P32 For Style 1221P32

**Tools Required:** Flathead screwdriver, Pliers screwdriver, pliers, wire cutters, wire strippers, electrical tape, safety glasses.  
Light Source: (12) 30 Candela Base Bulbs, 40W Incandescent (not included).

**Estimated Assembly Time:** 30-40 minutes  
**Preparation:** Identify and label all parts before beginning installation. Check package contents list and diagrams later in the manual to be sure all parts are present. If any parts are missing or damaged, do not attempt to assemble, install, or operate the fixture. Contact customer service for replacement parts.

## Warnings and Cautions

Turn off electricity at circuit breaker or main fuse box before installation. Connect a licensed electrician if in doubt. These instructions are provided for your safety. It is very important you read them completely before installing the fixture. We strongly recommend that a licensed, professional electrician perform the installation. Disconnect fixture from power source before replacing bulbs. Make sure bulbs are given sufficient time to cool before removal.

## Package Contents

- B Wedge Rod
- D1 4"x4pcs
- D2 6"x2pcs
- D3 12"x10pcs
- A Fixture Body x1
- C Glass tube x12

## Hardware Contents

PART	DESCRIPTION	QUANTITY
AA	Cap Nut	20pcs
BB	Hex Nut	20pcs
CC	Outlet Box	20pcs
DD	Mounting Screw	20pcs
EE	Mounting Bracket	20pcs

## STEP 1 - Install Rods to Fixture Body

A. Thread the power cord to the Middle Rod, fix the Middle Rods with the Fixture Body then the same to connect the other pieces of Rods, finally fix the Canopy with the Rods.

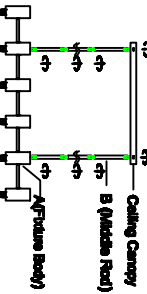


Figure 1

## STEP 2 - Attach Mounting Screws, Lock Washers and Hex Nuts to Mounting bracket.

A. Line up a set of holes on the Mounting bracket (EE) and Holes on the ceiling canopy. Thread Mounting Screws (DD) into the holes on the Mounting bracket (EE). Pass Lock Nuts onto the Mounting Screws (DD). Hand tighten until snug.

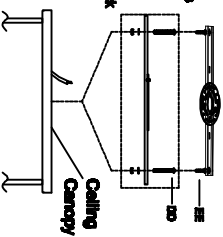


Figure 2

## STEP 3 - Attach Mounting bracket to Outlet Box

A. Pass the supply wires through the Mounting bracket (EE). Attach the Mounting bracket (EE) to the Outlet Box with the head of the Green Ground Screw facing you. Secure it with Outlet Box Screws (CC). Tighten until snug.

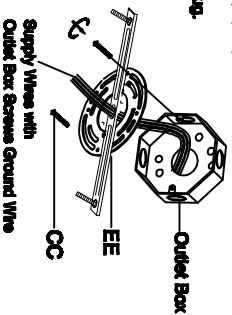


Figure 3

## STEP 4 - Fit Ceiling Canopy to Mounting bracket Assembly

A. Fit the ceiling canopy to Mounting Screws (DD) and secure with Cap nut (AA). Note: The ceiling canopy should be snug against the ceiling and the Cap nut (AA). If not, adjust the length of the Mounting Screws (DD) by unscrewing the Hex Nut and Lock Washer and then screwing Mounting Screws (DD) in or out of the Mounting bracket (EE) until the correct length is achieved. Once the ceiling canopy is secure, remove the Cap nut (AA) and ceiling canopy and proceed to Step 5.

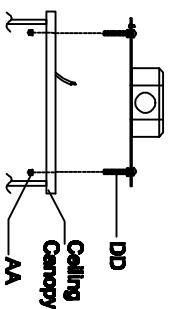


Figure 4

## STEP 5 - Wire Connections

A. Use standard wire connectors to make all wire connections. Twist connectors until wires are snugly joined together. Wrap each connection with approved electrical tape and carefully stuff all the connected wires into the Outlet Box.

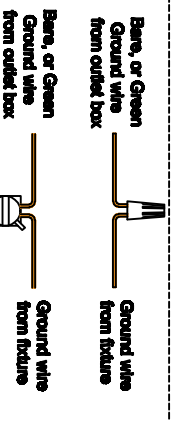
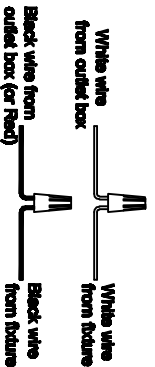


Figure 5

## STEP 6 - Install Ceiling Canopy to Ceiling

A. Carefully tuck all wires into the outlet box and position the ceiling canopy of the Fixture Body (A) over the outlet box. Align the holes in the ceiling canopy with the Mounting Screws (DD). Secure with Cap nut (AA) and hand tighten until snug.

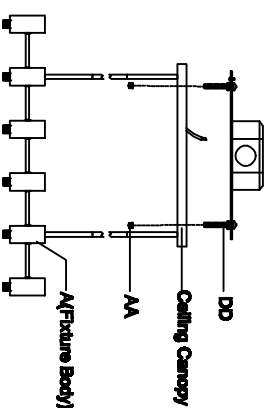


Figure 6

## STEP 7 - Install Bulbs and Glass tubes

A. Install bulbs into sockets and push snug into pins.  
B. Put the glass tubes to the Fixture Body.

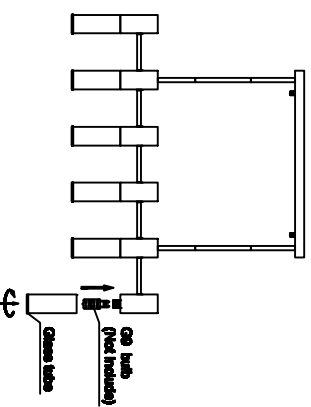


Figure 7