

Assembly Instruction Sheet #IS-9860P43

For Style 9860P43

Tools Required: Flathead screwdriver, Phillips screwdriver, pliers, wire cutters, wire strippers, electrical tape, safety glasses.

Light Source: (18) E12 Candelabra Base Bulbs 60W Maximum(Not Include).

Estimated Assembly Time: 10-20 minutes

Preparation: Identify and inspect all parts before beginning installation. Check package content list and diagrams below to be sure all parts are present. If any parts are missing or damaged, do not attempt to assemble, install, or operate the fixture. Contact customer service for replacement parts.

⚠ Warnings and Cautions

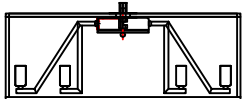
Turn off electricity at circuit breaker or main fuse box before installation. Consult a licensed electrician if in doubt.

These instructions are provided for your safety. It is very important you read them completely before installing the fixture.

We strongly recommend that a licensed, professional electrician perform the installation.

Disconnect fixture from power source before replacing bulbs. Make sure bulbs are given sufficient time to cool before removal.

Package Contents



A Fixture Body x1



C T shape holder x18 (UP)

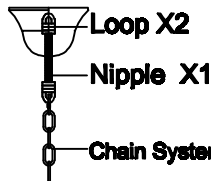
E Rod x1



B Crystal Panel x18



D T shape holder x18 (down)



Loop X2

Nipple X1

Chain System X1

F Ceiling Canopy

STEP 1 - Install the Mounting Bracket and mounting plate to the Ceiling

A. Attach mounting bracket to junction box using junction box screws and securely tighten.

B. Hold mounting plate up against junction box with the hoop facing down from the ceiling, make (4) marks on the ceiling from holes on the outside of the mounting plate for the Anchors. Remove mounting plate from ceiling, and drill holes on 4 marked spots into joists/beams (support) for the anchors. C. Insert (4) anchors into drilled holes properly. Push anchors into the drilled holes. Place the mounting plate flat on ceiling, and secure the plate to the anchors with the flat washer, spring washer and hex nut-secure and tighten with pliers.

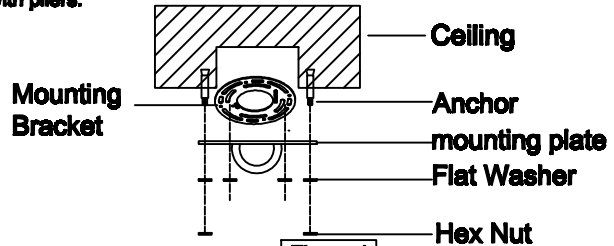


Figure 1

Hardware Contents

PART	DESCRIPTION	QUANTITY
AA	Electrical Marrets	2pcs
BB	Anchors	2pcs
CC	Junxtion Box Screws	2pcs
DD	Mounting Plate	1pcs
EE	Mounting Bracket	1pcs

AA



BB



CC



DD



EE



STEP 2 - Install Chain System and Fixture Body together

A. Unscrew and open the carabiner loop at the bottom of the canopy rod. Place the end chain link (after selecting your designated hanging height) in the carabiner, and screw back together by hand to secure until snug.

B. Remove the nipple off the of the opposite end of the canopy rod. Feed the electrical and ground wires up the chain, and into the bottom nipple of the canopy rod and completely out the other end. Fix the ceiling canopy cover over the canopy rod, and screw the nipple with the quick connector back onto the canopy rod.

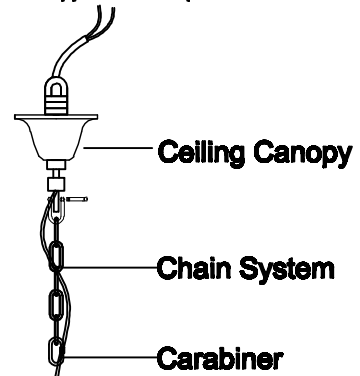


Figure 2