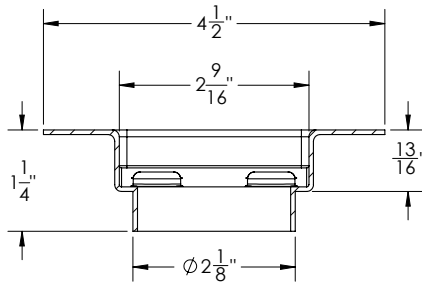


# FCB 65 Specifications



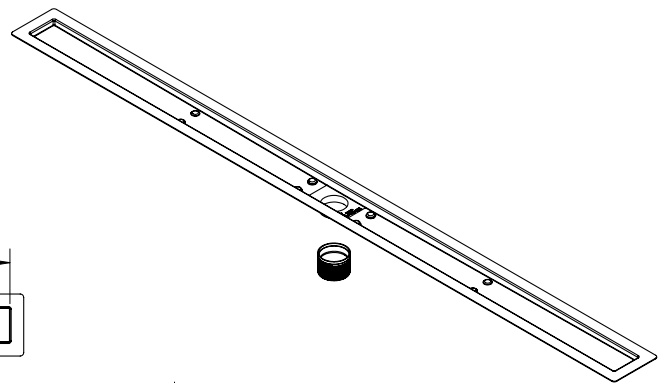
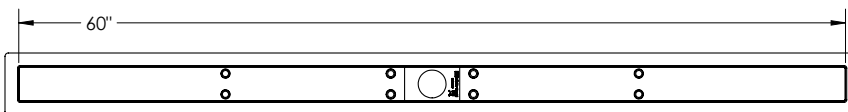
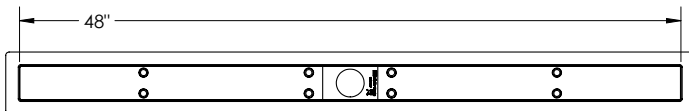
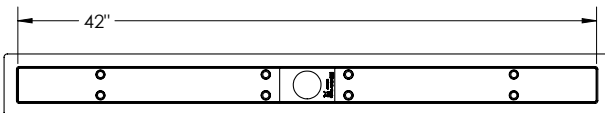
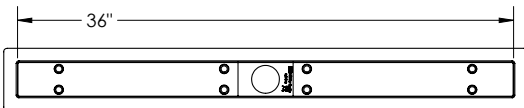
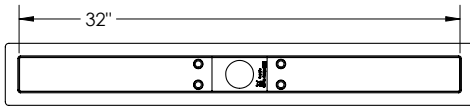
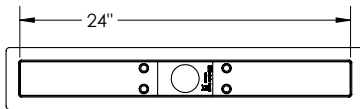
## FCB 65:

- Pre pitched Stainless steel flanged channel for FCB 65 Double Waterproofing series
- Compatible with liquid / fabric and traditional waterproofing applications
- Fixed Length NOT Site Sizable™
- 2" threaded wasteline connection via TNAS (included with channel)



## Models (overall dimensions):

- FCB 6524: 26" L x 4 1/2" W x 1 1/4" H
- FCB 6532: 34" L x 4 1/2" W x 1 1/4" H
- FCB 6536: 38" L x 4 1/2" W x 1 1/4" H
- FCB 6542: 44" L x 4 1/2" W x 1 1/4" H
- FCB 6548: 50" L x 4 1/2" W x 1 1/4" H
- FCB 6560: 62" L x 4 1/2" W x 1 1/4" H



**Infinity Drain**  
 145 Dixon Avenue  
 Amityville, NY 11701  
 Phone: 516.767.6786  
 Fax: 516.740.3066  
 www.infinitydrain.com



NOTE: Installer must verify all rough-in dimensions prior to installation and consult local and national codes. Conformity and compliance to local and national codes are the responsibility of the installer.