

# NHIC-501QAT

5" IC Air-Tight Line Voltage New Construction Housing

Source: 75W Max. (Varies by trim)

Type

Project

Catalog No.

Notes

## PRODUCT DESCRIPTION

New construction housing for use in insulated ceilings can be in direct contact with insulation. Air-tight construction provides energy savings by reducing the flow of air through the ceiling. The housing is labeled for use with Nora 5" line voltage trims and compatible with all LED retrofits.

## FEATURES

- IC Air-Tight energy saving by reducing the flow of air through the ceiling
- Rated for direct contact with insulation
- cULus listed for damp location and through branch circuit wiring
- Quick connect provided
- 24-1/2" Bar hangers with captive nails and alignment foot
- Accommodates 1-3/4" maximum ceiling thickness

## CONSTRUCTION

**Plastic Frame:** High quality 0.032 steel die cut one piece frame.

**Housing:** 0.040 steel housing with riveted cap adjusts to maximum ceiling thickness of 1-3/4". Constructed as spot welded cylindrical wrap capped with a riveted dome.

**Air Flow Restriction:** Housing has factory installed gaskets to restrict airflow from room into ceiling plenum to <2CFM (cubic feet per minute) in accordance with ASTM-283 Air-Tight requirements.

**Socket:** Socket is free floating and installs to eyeball, gimbal ring and trims equipped with socket brackets. Protective cap included to protect socket interior during ceiling painting.

**Bar Hangers:** Two 13-3/4" to 24-1/2" adjustable bar hangers with captive nails are included on frame. Hanger bars have T-Bar slot and alignment feet. Bar hangers are parallel to junction box, but can be repositioned 90° perpendicular to junction box if desired. "L" Shaped bar hanger foot to align to bottom of construction joist. A T-Bar notch allows easy installation in a suspended ceiling.

**Junction Box:** Prewired 25 cubic inch 0.064" thick galvanized steel, with five 1/2", two 3/4" knockouts, four Romex® pryouts, and snap on covers. All leads are #18AWG wire, the ground wire is connected to the bottom, and quick connectors are supplied on all leads. Through branch circuit wiring, (4-in, 4-out).

**Quick Connect Feature:** Housing contains three UL approved quick connections that allow insertion of 1/4" stripped solid or tinned standard conductors to be inserted into the connector. Connectors are pre-attached to fixture power, common, and ground circuits.

**Thermal Protector:** Standard UL thermal protector rated for 90°C is affixed to inner top surface of housing.

## ELECTRICAL

**Input Voltage:** 120V

**Socket:** Medium base

**Lamp:** Lamp type based on trim selection

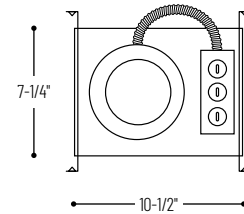
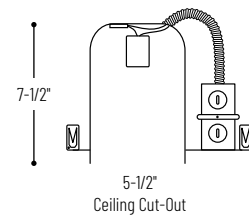
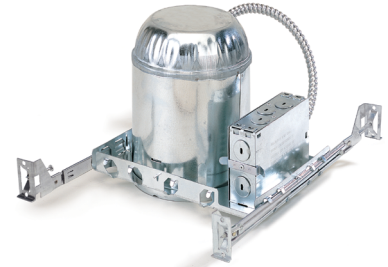
**Wattage:** 75W max. (wattage varies based on trim selection)

## LABELS AND LISTINGS

- cULus Listed for Damp Location w/ Feed Through (Wet Location when used with designated trims)
- Meets or exceeds ASTM-283 Air-Tight Requirements
- Washington State Approved
- NYC Approved: Calendar #43895



## PRODUCT IMAGES & DIMENSIONS



## 5" IC Air-Tight Line Voltage New Construction Housing

Housing Type

**NHIC-501QAT:** 5" IC Air-Tight Line Voltage New Construction Housing

Example: **NHIC-501QAT** = 5" IC Air-Tight Line Voltage New Construction Housing