

# NM2-2R270

2" M2 Round LED Recessed Elbow

Source: 6W LED

500lm

## PRODUCT DESCRIPTION

M2 downlight series features quality and convenience with easy installation for insulated or non-insulated applications. Luminaire can be configured into square trim with an accessory and produces over 500 lumens.

## FEATURES

- Field changeable optics (spot and narrow flood included)
- No housing required - IC Air-Tight rated
- Easy installation for remodel or new construction applications
- Square trim available for an alternative appearance
- Quick disconnect allows for extended lengths
- 2700K or 3000K @ 90+ CRI
- Triac or ELV dimming
- 5-year limited warranty
- ENERGY STAR certified
- cETLus Listed for Damp Locations

## SPECIFICATION

**Construction:** Die-cast aluminum trims available in matte black or matte powder white finish. Rotates 345° horizontally and extends up to 70°.

**Field Changeable Optics:** Each luminaire includes a spot (installed) and narrow flood optic. Optics can easily be replaced in the field.

**Air Flow Restriction:** Luminaire has factory installed gasket to restrict airflow from room into ceiling plenum to <2CFM (cubic feet per minute) in accordance with ASTM-283 Air-Tight requirements.

**Clearance:** IC rated luminaires are rated for direct contact with insulation (not spray foam insulation), no minimum clearance is required.

**Junction Box:** Prewired junction box includes quick connect to LED fixtures for ease of installation. Junction box includes two 1/2" trade size knockouts and snap on cover with 7" connector length. Luminaire includes 6" quick connect wire.

**Mounting:** No housing is required, two tensions steel spring clips secure luminaire to ceiling. Accommodates ceiling thickness up to 3/4". New construction frame-in kit is available, see accessories.

## ELECTRICAL

**Input Voltage:** 120V

**Lumens / Wattage:** 500lm / 6W

**Color Temperature:** 2700K or 3000K

**CRI:** 90+CRI

**Beam Spread:** 33° Spot and 48° Narrow Flood

**Operating Temp.:** 0°C to 40°C ambient temperature

**Lifetime:** 33,000 hours @ L70

**Dimming:** Dimmable down to 10% with Triac or ELV

[Click Here](#) or check complete dimmer list at [www.NoraLighting.com](http://www.NoraLighting.com) in the "Compatibility" page under "Resources" tab

## OPTIONAL TRIM ACCESSORY

**NM2-2SET:** Square Trim for NM2-2R270, Black or White

## OPTIONAL MOUNTING ACCESSORIES

**NM2-2R-F:** New Construction Frame-In Plate

**NM2-EW-4:** 4' Quick Connect Linkable Extension Cable

**NM2-EW-10:** 10' Quick Connect Linkable Extension Cable

## LABELS AND LISTINGS

- cETLus Listed for Damp Locations
- ENERGY STAR certified
- [5-Year Limited Warranty](#)
- FCC compliant
- Certified to the high efficacy requirements of California Title 24 JA8-2019



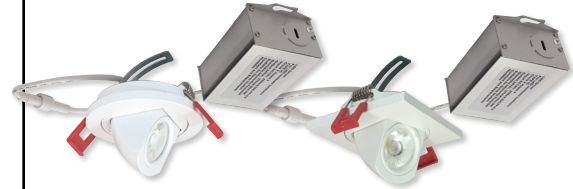
Type

Project

Catalog No.

Notes

## PRODUCT IMAGES AND DIMENSIONS



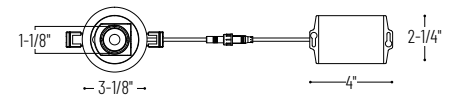
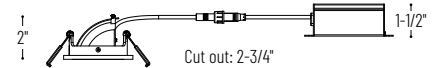
**NM2-2R270**  
Matte Powder White

**NM2-2R270 + NM2-2SET**  
Matte Powder White

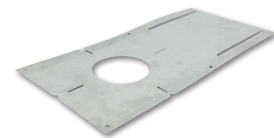


**NM2-2R270**  
Matte Black

**NM2-2R270 + NM2-2SET**  
Matte Black



**NM2-2SET**  
Square Trim



**NM2-2R-F**  
New Construction Frame-In Plate



**NM2-EW-4 / NM2-EW-10**  
Quick Connect Extension Cable

## 2" M2 Round LED Recessed Elbow

Trim Type	Lumens / Wattage	Color Temperature / CRI	Finish
<b>NM2-2R270</b> = 2" Round Elbow	<b>50</b> = 500lm / 6W	<b>27</b> = 2700K / 90 CRI <b>30</b> = 3000K / 90 CRI	<b>BB</b> = Matte Black <b>MPW</b> = Matte Powder White

## M2 Trim Accessory

Accessory Type	Finish
<b>NM2-2SET</b> = Square Trim for NM2-2R270	<b>B</b> = Matte Black <b>MPW</b> = Matte Powder White

## Optional Mounting Accessories

Description
<b>NM2-2R-F</b> = New Construction Frame-In Plate
<b>NM2-EW-4</b> = 4' Quick Connect Extension Cable
<b>NM2-EW-10</b> = 10' Quick Connect Extension Cable

Example: **NM2-2R2705030MPW** = 2" M2 Round LED Recessed Elbow, 500lm / 6W, 3000K / 90 CRI, Matte Powder White

# NM2-2R270

2" M2 Round LED Recessed Elbow Accessories

Type	_____
Project	_____
Catalog No.	_____
Notes	_____



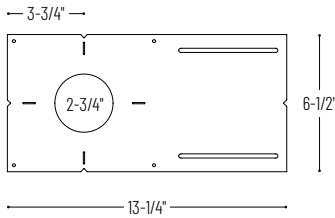
Square Trim for NM2-2R270

**NM2-2SETB** Matte Black  
**NM2-2SETPW** Matte Powder White  
Converts the round trim included with NM2-2R270 elbow into a square trim



New Construction Frame-In Plate

**NM2-2R-F**  
For new construction pre-wiring and easier layout planning.



Quick Connect Extension Linkable Cables

**NM2-EW-4** 4' Cable  
**NM2-EW-10** 10' Cable  
Use to extend the length between luminaire and driver enclosure. Can be connected together to create custom lengths. Maximum length between luminaire and driver is 40'.

# PHOTOMETRICS

## 2" M2 Round LED Recessed Elbow

Type

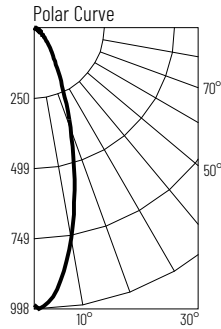
Project

Catalog No.

Notes

### Test Information

Test Number: NTR1571  
 Part Number: NM2-2R2705027MPW  
 Beam Spread: 33° Spot  
 Lumens: 513lm  
 Wattage: 5.68W  
 Efficacy: 90lpw  
 CCT / CRI: 2700K / 90 CRI  
 Spacing Criteria (0°-180): 0.56  
 Spacing Criteria (90°-270): 0.56



### Illuminance at a Distance

Distance from Luminaire	FC at Nadir	Beam Diameter
2'	246fc	1'-2"
4'	61.6fc	2'-5"
6'	27.4fc	3'-7"
8'	15.4fc	4'-10"
10'	9.9fc	6'

### Zonal Lumen Summary

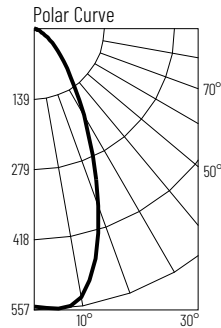
Zone	Lumens	% Luminaire
0-30	347	67.6
0-40	417	81.2
0-60	489	95.3
0-90	513	99.9
90-180	1	0.1
0-180	513	100

### Candela Table

Vertical Angles	Candela
0	985
5	913
15	552
25	240
35	105
45	56

### Test Information

Test Number: NTR1570  
 Part Number: NM2-2R2705027MPW  
 Beam Spread: 48° Narrow Flood  
 Lumens: 514lm  
 Wattage: 5.66W  
 Efficacy: 91lpw  
 CCT / CRI: 2700K / 90 CRI  
 Spacing Criteria (0°-180): 0.78  
 Spacing Criteria (90°-270): 0.8



### Illuminance at a Distance

Distance from Luminaire	FC at Nadir	Beam Diameter
2'	138fc	1'-10"
4'	34.4fc	3'-6"
6'	15.3fc	5'-4"
8'	8.6fc	7'-1"
10'	5.5fc	8'-11"

### Zonal Lumen Summary

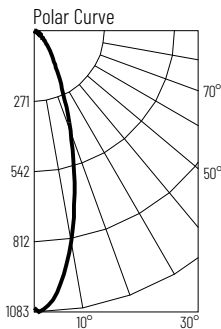
Zone	Lumens	% Luminaire
0-30	304	59.2
0-40	393	76.4
0-60	487	94.6
0-90	514	99.9
90-180	1	0.1
0-180	514	100

### Candela Table

Vertical Angles	Candela
0	551
5	549
15	455
25	266
35	138
45	74

### Test Information

Test Number: NTR1573  
 Part Number: NM2-2R2705027MPW  
 Beam Spread: 33° Spot  
 Lumens: 565lm  
 Wattage: 5.66W  
 Efficacy: 100lpw  
 CCT / CRI: 3000K / 90 CRI  
 Spacing Criteria (0°-180): 0.56  
 Spacing Criteria (90°-270): 0.56



### Illuminance at a Distance

Distance from Luminaire	FC at Nadir	Beam Diameter
2'	271fc	1'-2"
4'	67.7fc	2'-5"
6'	30.1fc	3'-7"
8'	16.9fc	4'-10"
10'	10.8fc	6'

### Zonal Lumen Summary

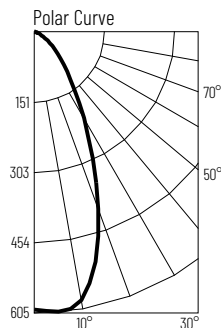
Zone	Lumens	% Luminaire
0-30	387	68.5
0-40	454	80.4
0-60	537	95.1
0-90	564	99.9
90-180	1	0.1
0-180	565	100

### Candela Table

Vertical Angles	Candela
0	1083
5	1006
15	612
25	274
35	114
45	59

### Test Information

Test Number: NTR1572  
 Part Number: NM2-2R2705027MPW  
 Beam Spread: 49° Narrow Flood  
 Lumens: 561lm  
 Wattage: 5.66W  
 Efficacy: 99lpw  
 CCT / CRI: 3000K / 90 CRI  
 Spacing Criteria (0°-180): 0.78  
 Spacing Criteria (90°-270): 0.8



### Illuminance at a Distance

Distance from Luminaire	FC at Nadir	Beam Diameter
2'	149fc	1'-10"
4'	37.3fc	3'-7"
6'	16.6fc	5'-5"
8'	9.3fc	7'-2"
10'	6fc	9'-1"

### Zonal Lumen Summary

Zone	Lumens	% Luminaire
0-30	332	59.2
0-40	429	76.4
0-60	530	94.6
0-90	560	99.9
90-180	1	0.1
0-180	561	100

### Candela Table

Vertical Angles	Candela
0	598
5	601
15	500
25	291
35	150
45	81