

NQZ-6

6" Quartz Tunable Wattage / Tunable White Reflectors

Source: 10W to 26W LED
900lm to 2100lm

Type

Project

Catalog No.

Notes

PRODUCT DESCRIPTION

Quartz Series series is an architectural and commercial grade LED high lumen downlight. Each luminaire includes two tunable switches; Tunable Wattage allows the end user to determine the lumen output & Tunable White allows for selectable kelvin temperature. Reflectors include two tension steel spring clips, which allow the luminaires to install without any frame-in or housing with easy installation.

FEATURES

- No frame-in or housing required
- Easy installation for retrofit, remodel or new construction applications
- Tunable Wattage switch allows for selectable lumen outputs from 900lm to 2100lm
- Tunable White switch allows for selectable kelvin temperatures in 3000K, 3500K or 4000K @ 90+ CRI
- Field changeable reflector allows for easy customization
- 0-10V dimming
- 5-year limited warranty
- ENERGY STAR certified
- cULus Listed for Wet Locations

SPECIFICATION

Reflector: Aluminum spun reflector with deep set diffused lens for excellent visual comfort while providing high lumen output. Each reflector comes standard with matte powder white finish, optional haze and diffused snap-in reflectors are available and field changeable.

Tunable Switches: Each luminaire includes two switches on the top of the driver enclosure. Tunable wattage switch changes the lumen output and wattage. Tunable white switch changes the kelvin temperature.

Minimum Clearances: Non-IC luminaire requires a minimum clearance of 3" from thermal insulation and 1/2" from adjacent building components.

Mounting: Pre-wired 4" junction box with through branch circuit wiring (3 in / 3 out). No housing is required, two tensions steel spring clips accommodate ceiling thickness from 1/2" to 1-1/2". New construction frame-in kit is available, must specify NQZ-6R-F.

ELECTRICAL

Input Voltage: 120-277V

Lumens / Wattage: 900lm / 10W, 1300lm / 16W, 1700lm / 21W and 2100lm / 26W

Beam Spread: 91° Wide Flood

Color Temperature: 3000K, 3500K and 4000K

CRI: 90+CRI

Operating Temperature: 0°C - 45°C (0°C-40°C with emergency option)

Lifetime: 50,000 hours @ L70

Dimming: Dimmable down to 10% with 0-10V dimmer

[Click Here](#) or check complete dimmer list at www.NoraLighting.com in the "Compatibility" page under "Resources" tab

Optional Emergency: Luminaire includes pre-wired 120-277V emergency battery with remote test switch. Battery operates luminaire at 7W for 90 minute emergency operation with a fully charged battery.

LABELS AND LISTINGS

- cULus Listed for Wet Locations
- ENERGY STAR certified
- [5-Year Limited Warranty](#)
- FCC compliant



PRODUCT IMAGES AND DIMENSIONS



Tunable White

Selectable CCT
3000K, 3500K, or 4000K

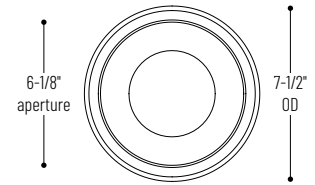
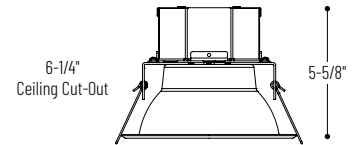
Tunable Wattage

Selectable Lumen
900lm, 1300lm, 1700lm, or 2100lm



NQZ-61TWTW-MPW

6" Quartz with Matte Powder White Reflector



NQZ-61TWTW-MPW / NQZ-61REFLC

6" Quartz with Specuar Clear Reflector



NQZ-61TWTW-MPW / NQZ-61REFLD

6" Quartz with Clear Diffused Reflector



NQZ-61TWTW-MPW / NQZ-61REFLHZ

6" Quartz with Haze Reflector

6" Quartz Tunable Wattage / Tunable White Reflector

Reflector Type	Lumens / Wattage / Color Temperature	Reflector / Flange Finish	Optional Emergency
NQZ-61 = 6" Open Reflector	TWTW = 900lm, 1300lm, 1700lm, 2100lm 3000K, 3500K, 4000K	-MPW = Matte Powder White	EM = Emergency with Remote Test Switch

Optional Accessories

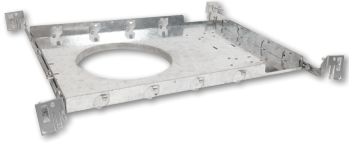
Description
NQZ-6R-F = 6" New Construction Frame-In
NQZ-61REFLC = 6" Specular Clear Snap-in Reflector
NQZ-61REFLD = 6" Clear Diffused Snap-in Reflector
NQZ-61REFLHZ = 6" Haze Snap-in Reflector

Example: NQZ-61TWTW-MPW = 6" Quartz Downlight, Tunable Wattage, Tunable White, Matte Powder White

NQZ-6

6" Quartz Tunable Wattage / Tunable White Accessories

Type _____
Project _____
Catalog No. _____
Notes _____



New Construction Frame-In Kit

NQZ-6R-F

For new construction pre-wiring and easier layout planning.



Specular Clear Reflector

NQZ-61REFLC

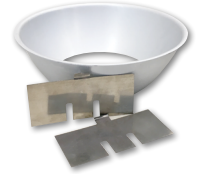
Snap-in reflector is field changeable and fits over 6" Quartz reflector.



Clear Diffused Reflector

NQZ-61REFLD

Snap-in reflector is field changeable and fits over 6" Quartz reflector.



Haze Reflector

NQZ-61REFLHZ

Snap-in reflector is field changeable and fits over 6" Quartz reflector.

PHOTOMETRICS

6" Quartz Tunable Wattage / Tunable White Reflectors

Type

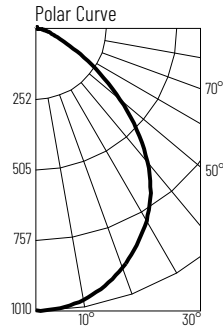
Project

Catalog No.

Notes

Test Information

Test Number: NTR1225
 Part Number: NQZ-61TWTW-MPW
 Beam Spread: 91° Wide Flood
 Lumens: 2063lm
 Wattage: 24.4W
 Efficacy: 85lpw
 CCT / CRI: 3000K / 90 CRI
 Spacing Criteria (0°-180): 1.18
 Spacing Criteria (90°-270): 1.2



Illuminance at a Distance

Distance from Luminaire	FC at Nadir	Beam Diameter
4'	63fc	8'-1"
6'	28fc	12'-2"
8'	15.8fc	16'-4"
10'	10.1fc	20'-5"
12'	7fc	24'-5"

Zonal Lumen Summary

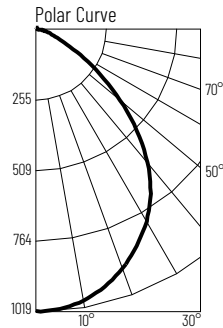
Zone	Lumens	% Luminaire
0-30	759	36.8
0-40	1206	58.5
0-60	1856	89.9
0-90	2045	99.1
90-180	18	0.9
0-180	2063	100

Candela Table

Vertical Angles	Candela
0	1009
5	1003
15	952
25	856
35	718
45	516

Test Information

Test Number: NTR1226
 Part Number: NQZ-61TWTW-MPW
 Beam Spread: 91° Wide Flood
 Lumens: 2080lm
 Wattage: 23.33W
 Efficacy: 89lpw
 CCT / CRI: 3500K / 90 CRI
 Spacing Criteria (0°-180): 1.18
 Spacing Criteria (90°-270): 1.2



Illuminance at a Distance

Distance from Luminaire	FC at Nadir	Beam Diameter
4'	63.6fc	8'-1"
6'	28.2fc	12'-2"
8'	15.9fc	16'-2"
10'	10.2fc	20'-4"
12'	7.1fc	24'-4"

Zonal Lumen Summary

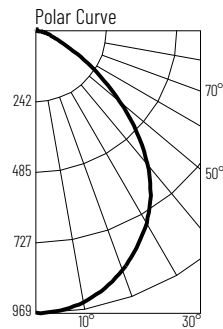
Zone	Lumens	% Luminaire
0-30	764	36.8
0-40	1215	58.4
0-60	1866	89.7
0-90	2060	99
90-180	20	1
0-180	2080	100

Candela Table

Vertical Angles	Candela
0	1017
5	1009
15	959
25	860
35	721
45	517

Test Information

Test Number: NTR1227
 Part Number: NQZ-61TWTW-MPW
 Beam Spread: 91° Wide Flood
 Lumens: 2002lm
 Wattage: 24.39W
 Efficacy: 82lpw
 CCT / CRI: 4000K / 90 CRI
 Spacing Criteria (0°-180): 1.18
 Spacing Criteria (90°-270): 1.18



Illuminance at a Distance

Distance from Luminaire	FC at Nadir	Beam Diameter
4'	60.6fc	8'-1"
6'	26.9fc	12'-1"
8'	15.1fc	16'-2"
10'	9.7fc	20'-2"
12'	6.7fc	24'-4"

Zonal Lumen Summary

Zone	Lumens	% Luminaire
0-30	728	36.4
0-40	1155	57.7
0-60	1782	89
0-90	1980	98.9
90-180	21	1.1
0-180	2002	100

Candela Table

Vertical Angles	Candela
0	969
5	964
15	916
25	823
35	689
45	491