

## GE Freestanding Tub Filler

### FEATURES

- Solid brass construction
- Smooth handle control with COMFORT GLIDE® technology
- Diamond-Like Carbon (DLC) coated ceramic cartridge for ultimate durability
- Lever handle
- For use with freestanding tub filler base rough-in (TBN01105U)
- Includes 1.75 gpm handshower
- Balanced COMFORT WAVE® technology with wide coverage rinse & wash
- Meets 2018 California Water Efficiency appliance and leakage regulations by CEC

### REQUIRED COMPONENTS (Sold Separately)

- **TBN01105U** (Sold Separately)  
Freestanding Tub Filler Base Rough-In

### COLORS/FINISHES

- #CP Polished Chrome
  - #BN Brushed Nickel
  - #PN Polished Nickel
- Made to Order**
- #PFG Polished French Gold
  - #PBR Polished Bronze
  - #PBL Polished Black
  - #PRG Polished Rose Gold
  - #MBL Matte Black
  - #BRG Brushed Rose Gold

### PRODUCT SPECIFICATION

Tub filler trim shall have a solid brass construction. Product shall have lever handles. Product shall include handshower and shower hose. Product requires TBN01105U rough-in, sold separately. Product shall be TOTO Model TBG07306U#\_\_\_\_\_.



COMFORT GLIDE



COMFORT WAVE

### CODES/STANDARDS

- Meets or exceeds ASME A112.18.1/CSA B125.1
- Certifications: IAPMO(cUPC), EPA WaterSense, State of Massachusetts and others
- Code Compliance: UPC, IPC, NSPC, NPC Canada, and others
- California Green Building Code, City of Los Angeles Water Efficiency Ordinance
- Complies with CA Prop 65 warning requirements

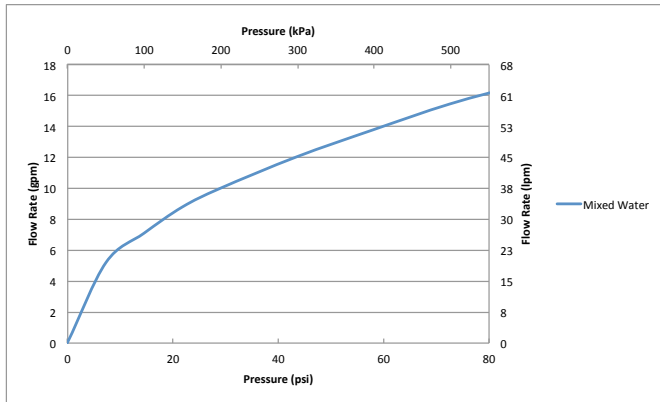


# TBG07306U

## GE Freestanding Tub Filler

### SPECIFICATIONS

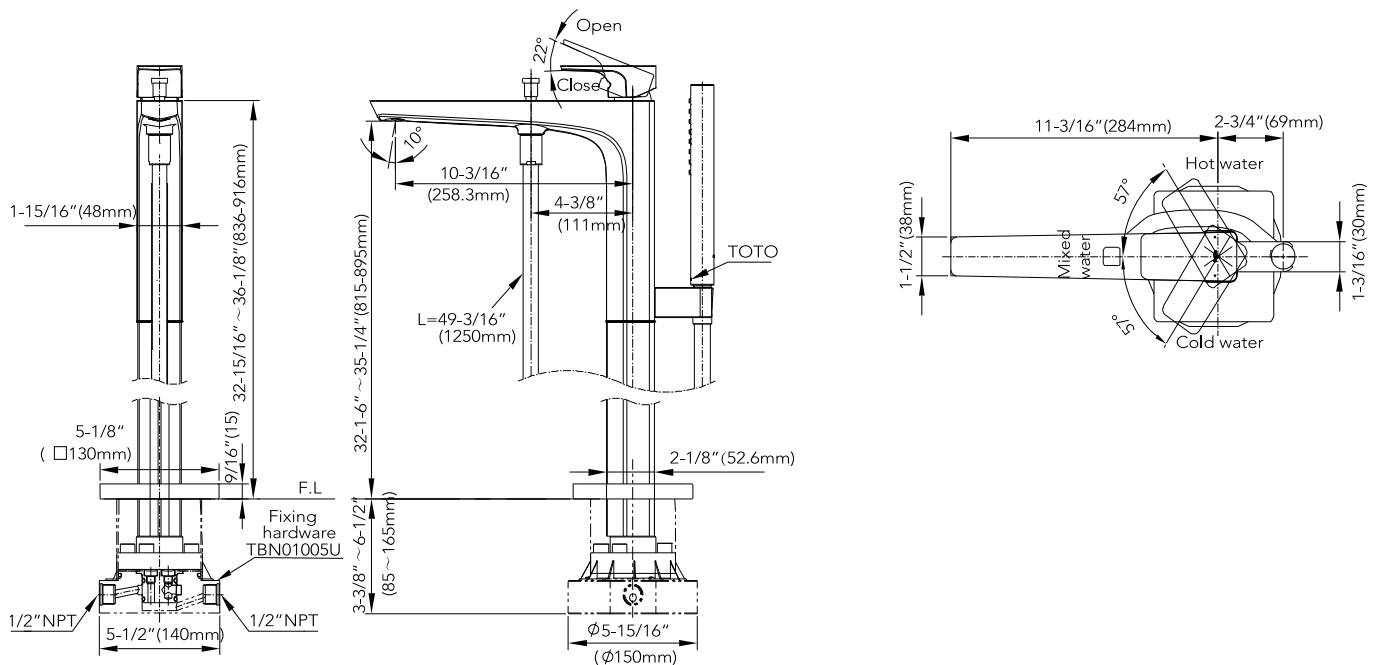
<b>Material</b>	Brass
<b>Maximum Shower Flow Rate</b>	1.75 gpm (6.6 lpm)
<b>Warranty</b>	Lifetime Limited Warranty (Residential Use) One Year (Commercial Use)



### INSTALLATION NOTES

- Check local codes for requirements on installing an ASSE 1070/ASME A112.1070/CSA B125.70 compliant device in series with the tub filler
- Freestanding tub filler base rough-in TBN01105U sold separately
- Please refer to the TBN01105U spec sheet for more required installation details

### DIMENSIONS



NOTE: The unit of the above dimensions is inches (mm). Tub filler base sold separately

**TOTO**

These dimensions and specifications are subject to change without notice

Ph: (888) 295-8134 | Fax: (800) 699-4889 | www.totousa.com | © TOTO USA

# SS-01584 v.01